

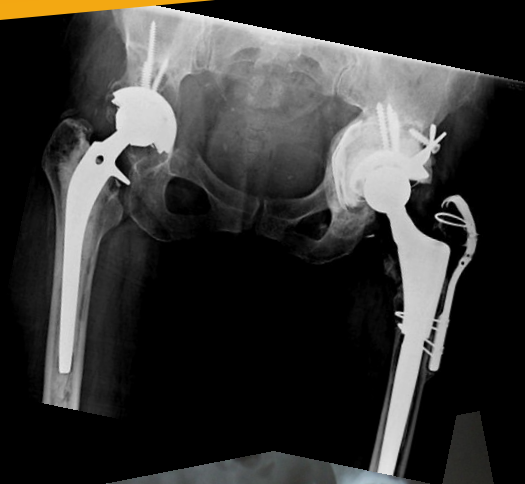
The Liverpool Arthroplasty Image Interpretation Course 2010

hosted by the University of Liverpool

A course for Health Practitioners providing care for Hip and Knee Arthroplasty patients.

Thursday 9 September 2010

- Principles of IRMER
- ABC of X-Rays / Basic of Image Interpretation
- Complications of Hip and Knee Replacements



Friday 10 September 2010

- Practical Workshop 1 and 2 - Hip
- Practical Workshop 1 and 2 - Knee
- Problem solving case studies



Venue:

Room 5.12 | Cedar House | Ashton Street | L69 3GE



Cost per delegate - £300

For any queries regarding the course please contact the CPD Team: cpdhsci@liv.ac.uk / 0151 794 5661

[To access the online registration form click on this link.](#)

[Online payments accepted via this link.](#)



UNIVERSITY OF
LIVERPOOL



'What are we looking for'

A course in image interpretation of hip and knee joint replacement

Programme

Thursday 9 September 2010

Registration / Tea Coffee

- 10:00 Introduction
Jill Pope
- 10:30 Principles of IRMER
- 11:00 ABC of X-rays: Basic Image Interpretation
Rose Edwards
- 12:30 Lunch - sponsored by ACPA
- 13:30 Complications of Hip and Knee Replacements: Part 1
Alasdair Santini
- 14:45 Coffee
- 15:00 Complications of Hip and Knee Replacements: Part 2
Alasdair Santini
- 15:30 Competencies for Image Interpretation
Jill Pope
- 16:15 Close



Friday 10 September 2010

- 09:30 Practical Workshop Hip 1
- 11:15 Coffee
- 11:30 Practical workshop Hip2
- 13:00 Lunch
- 14:00 Practical Workshop Knee 1
- 15:15 Coffee
- 15:30 Practical Workshop Knee 2
- 16:45 Conclusion / Close



UNIVERSITY OF
LIVERPOOL

